

KITCHEN

FLAT 9, WICKSTEED HOUSE,
COUNTRY STREET,
ELEPHANT & CASTLE

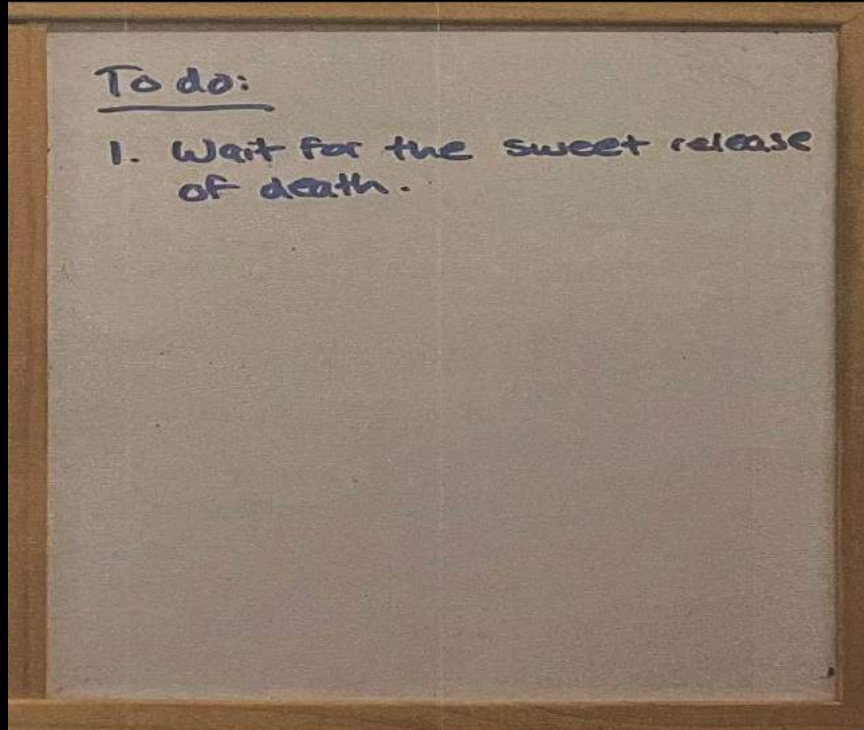
PERSPECTIVE VIEWS
30-09-23 11:46 AM



METHODS OF INVESTIGATION

1. Perspective sketches
2. Painting,
3. Audio recordings
4. Engineering/architectural drawings
5. Material mapping
6. Collaging
7. Note making
8. Photography

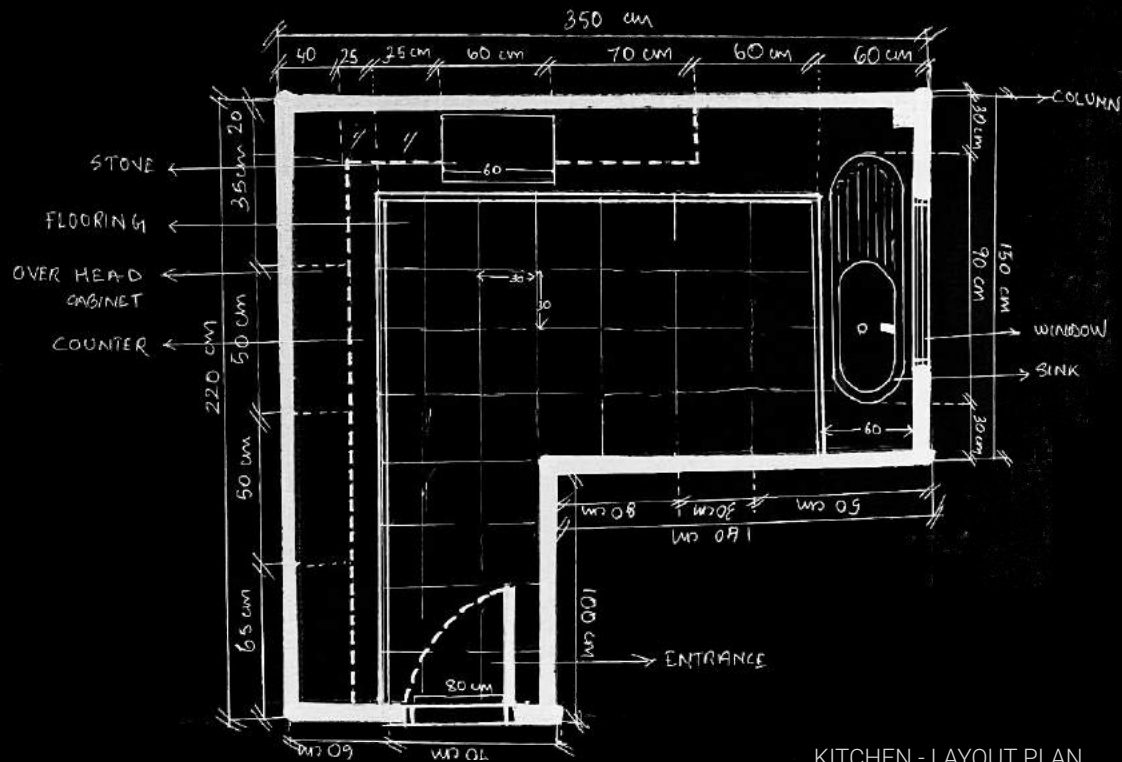
- This image shows the top perspective view of the entire kitchen, which is the site of choice. The kitchen is very small, scale of which can be understood by using the slippers in the image as an average size reference.
- The main materials used in the kitchen are namely, wood, porcelene , black granite with grey spots, metal, glass, and plastic.
- The kitchen is extremely old, as can be observed from the worn out machinery.
- The only two sources of light for this kitchen is the window and the single rectilinear tube light on the ceiling.
- The use of the color blue for the wall tiles and dark grey color for the floor tiles, along with the brown cabinets and black countertop, contrast sharply and add depth to the space.



REASON FOR SITE SELECTION-

"WAIT FOR THE SWEET RELEASE OF DEATH!"

- This quote that was written on the corkboard in the kitchen, is why I choose the kitchen as my site.
- When I read the quote, it was quite intimidating, the thought of why the previous tenants of the house would leave such a note behind made me anxious.
- As i used and investigated the kitchen further, i found that it was extremely worn out due to lack of maintenance and negligence.
- The quote them made sense to me, and all i could see in the kitchen were it's damages.
- For instance, the blinds were broken, which one cannot notice but will only realise upon use, similarly, the sink had severe clogging issues when used. The cabinets by the washer were broken, the counter top had several stains and broken parts on it.



KITCHEN - LAYOUT PLAN
30-09-23 11:46 AM

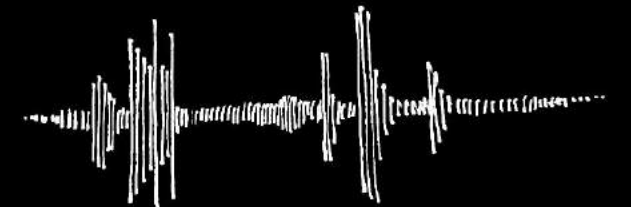
- ① SINK DRAIN : 5 SECONDS



- ② FLOWING TAP : 7 SECONDS



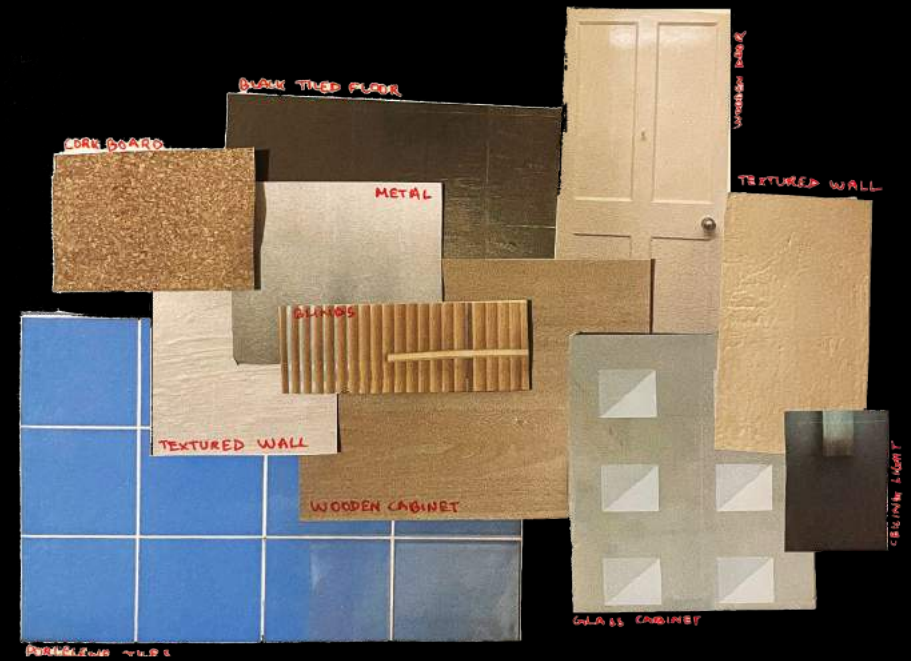
- ③ CUTLERY DRAWN: 3 SECONDS



AUDIO RECORDING -
SKETCH 30-09-23



ITEMS LEFT BY TENANTS -
COLLAGE 30-09-23



MATERIAL MAPPING -
COLLAGE 30-09-23

**DEVELOPED METHOD
OF INVESTIGATION**TOP PERSPECTIVE VIEW
30-09-23 11:46 AM**KITCHEN**FLAT 9, WICKSTEED HOUSE,
COUNTRY STREET,
ELEPHANT & CASTLE

SE1 6RQ

DEVELOPED METHOD OF INVESTIGATION - PHOTOGRAPHY**AREAS OF INVESTIGATION:**

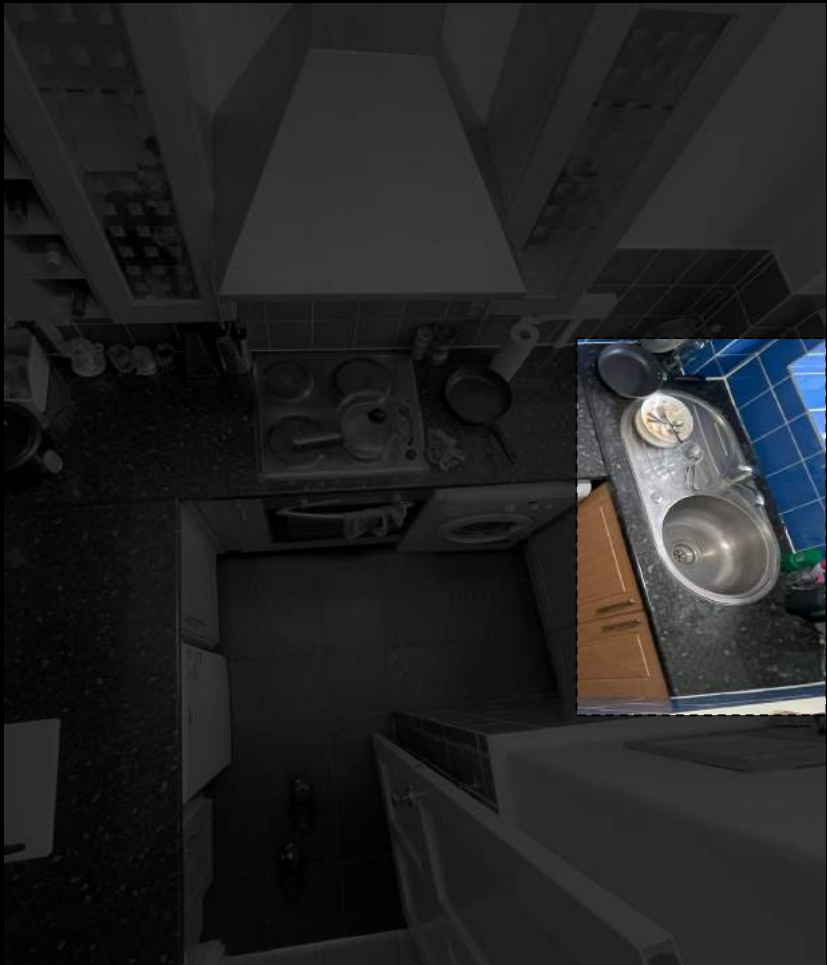
1. Wear & Tear
2. Textures
3. Lighting
4. Materiality
5. Surfaces
6. Machinery Functioning
7. Kitchen Equipments
8. Passed on items
- 9.

The chosen method of investing that I have developed on further is photography. The reason for this choice is because, based on previous methods of investigations (i.e. perspective sketches, painting, audio recordings, engineering/architectural drawings, material mapping, collaging, note making and photography), I found that the focus of the entire investigation is the "WEAR & TEAR" of the space.

Thus, photography and videography was the most efficient method of progressing with the investigations,

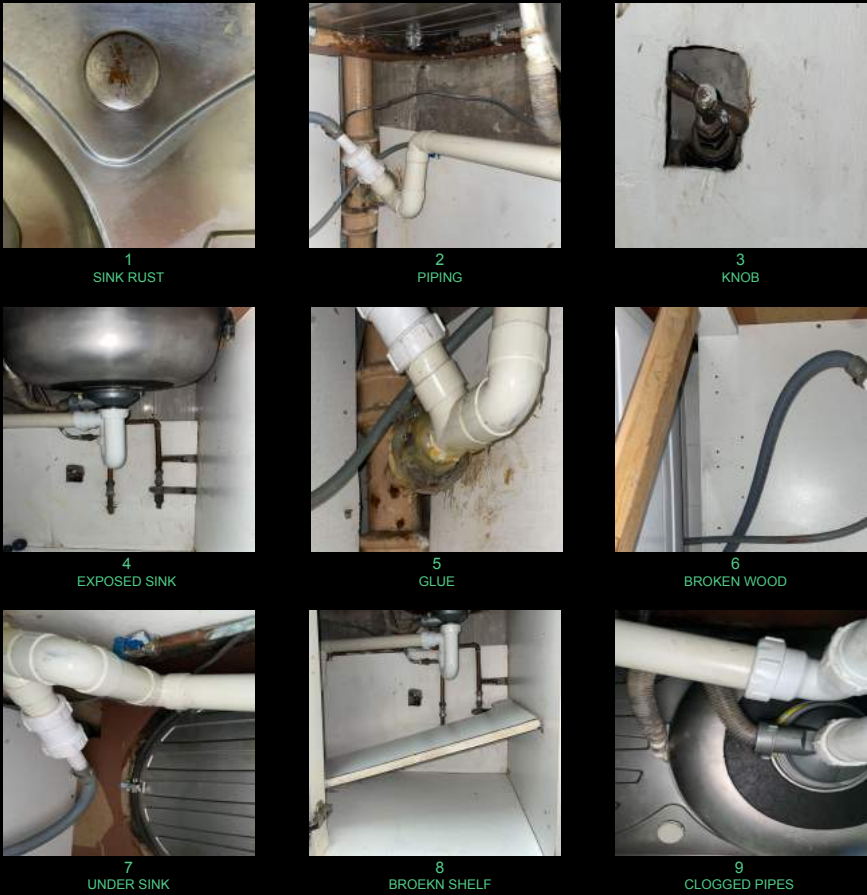
SINK AREA

TOP PERSPECTIVE VIEW
30-09-23 11:46 AM



KITCHEN
FLAT 9, WICKSTEED HOUSE,
COUNTRY STREET,
ELEPHANT & CASTLE

SE1 6RQ



WEAR & TEAR
UNDERNEATH SINK AREA





10
OVEN



11
BROKEN CABINET



12
AIR BUBBLES



13
STOVE DIRT



14
BUMPY FLOOR



15
BROKEN SHELF



16
DIRTY EXHAUST



17
GREASY FLOOR



18
DIRTY CEILING



19
CHIPPED WALLS

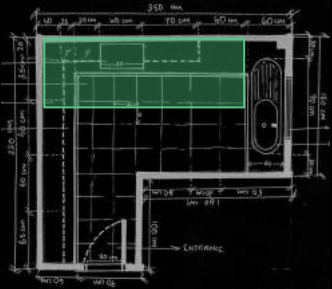


20
BLOCKED EXHAUST



21
BROKEN CABINET

KITCHEN - LAYOUT PLAN
30-09-23 11:46 AM



DAMAGED & DIRTY STOVE AREA



22
CHIPPED DOOR FRAME



23
EXPOSED PIPING



24
CHIPPED WOOD



25
RUST

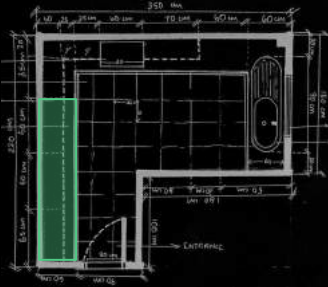


26
WHOLE IN SHELF



27
MISSING CABINET ROOF

KITCHEN - LAYOUT PLAN
30-09-23 11:46 AM



DAMAGED & DIRTY CABINETS AREA



28
SEVERELY CLOGGED SINK



29
BROKEN BLINDS



30
LEAKING WASHING MACHINE



31
BROKEN FRIDGE DOOR

DAMAGED EQUIPMENTS/ MACHINERY
FUNCTIONAL ELEMENTS